



Installation troubleshooter

Don't forget! The addin file must be stored in a permanent location such a:

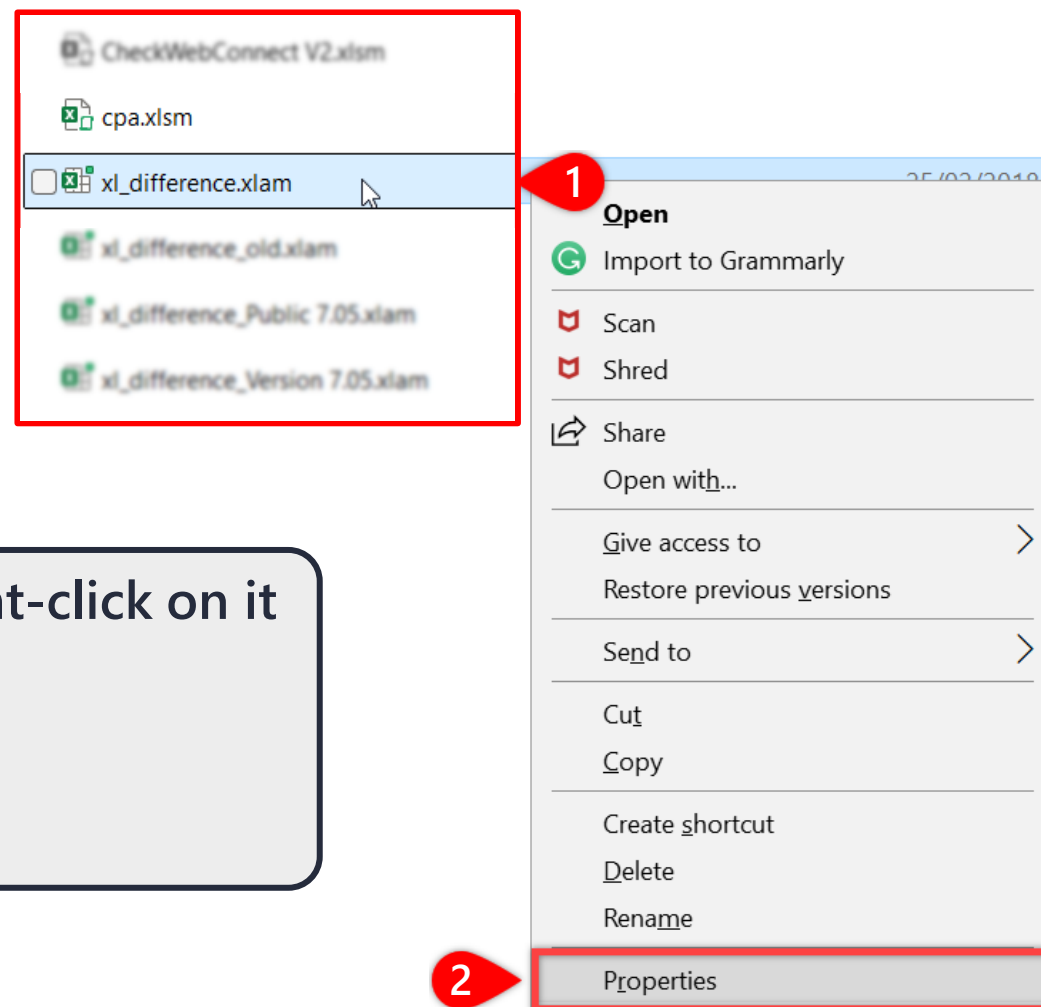
`C:\Users\YOURNAME\Documents`

Don't leave it in the Downloads folder!

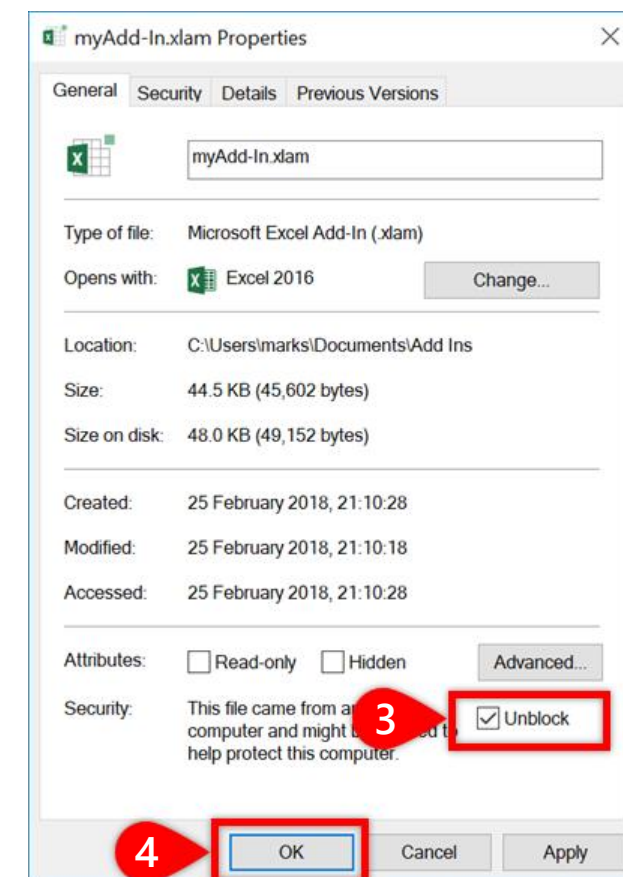
- ≡ Unblock files downloaded from internet
- ≡ Enable macros
- ≡ Enable Trusted Locations
- ≡ Update the addin
- ≡ Other related files



Unblock files downloaded from internet



- 1) Locate the addin file, right-click on it
- 2) Go to Properties...
- 3) Check the box "Unblock"
- 4) Click on OK

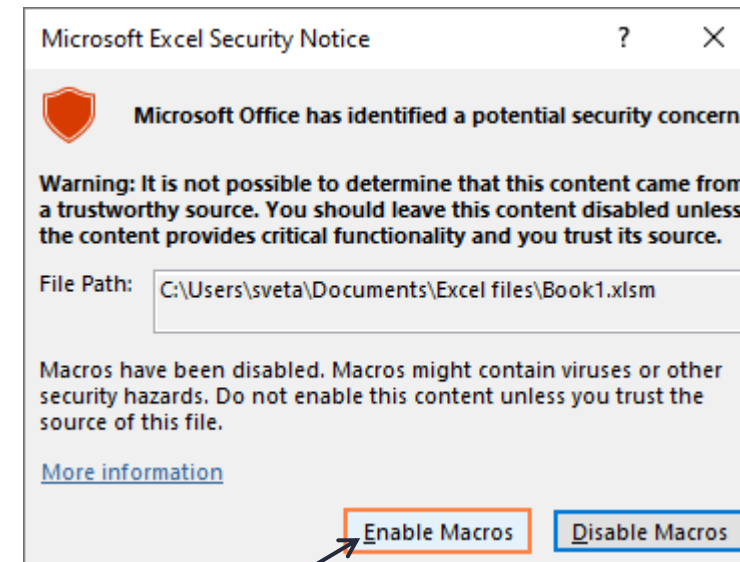
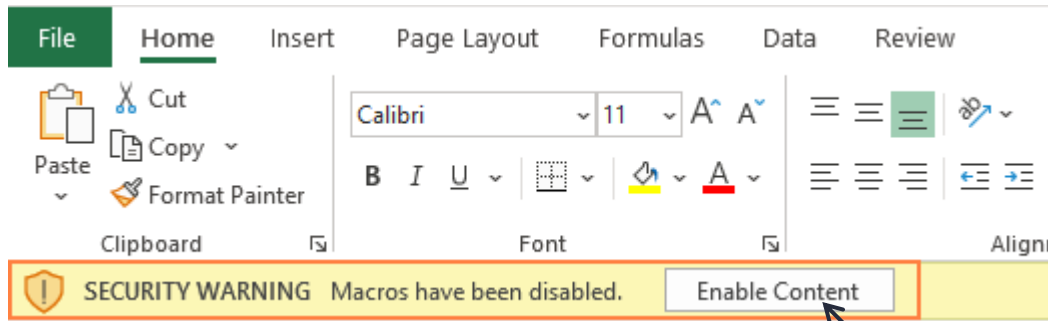




Enable macros

≡ The addin is 100% macros!

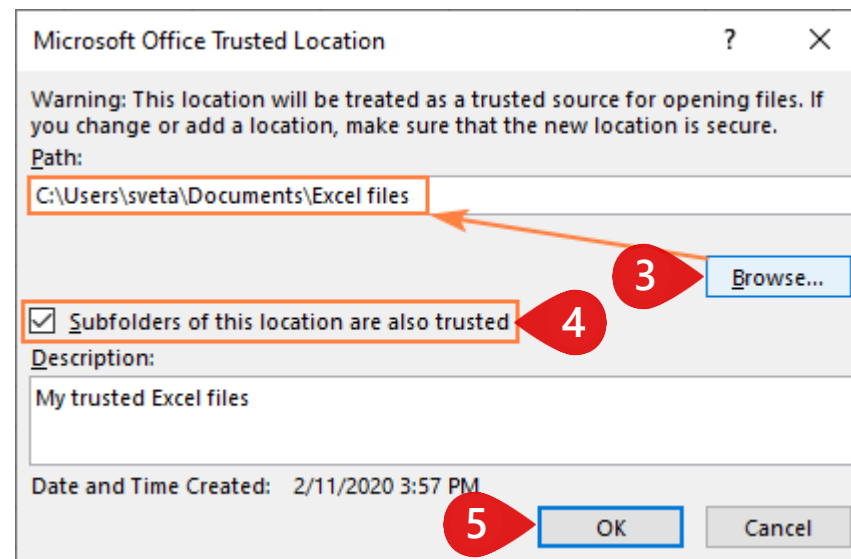
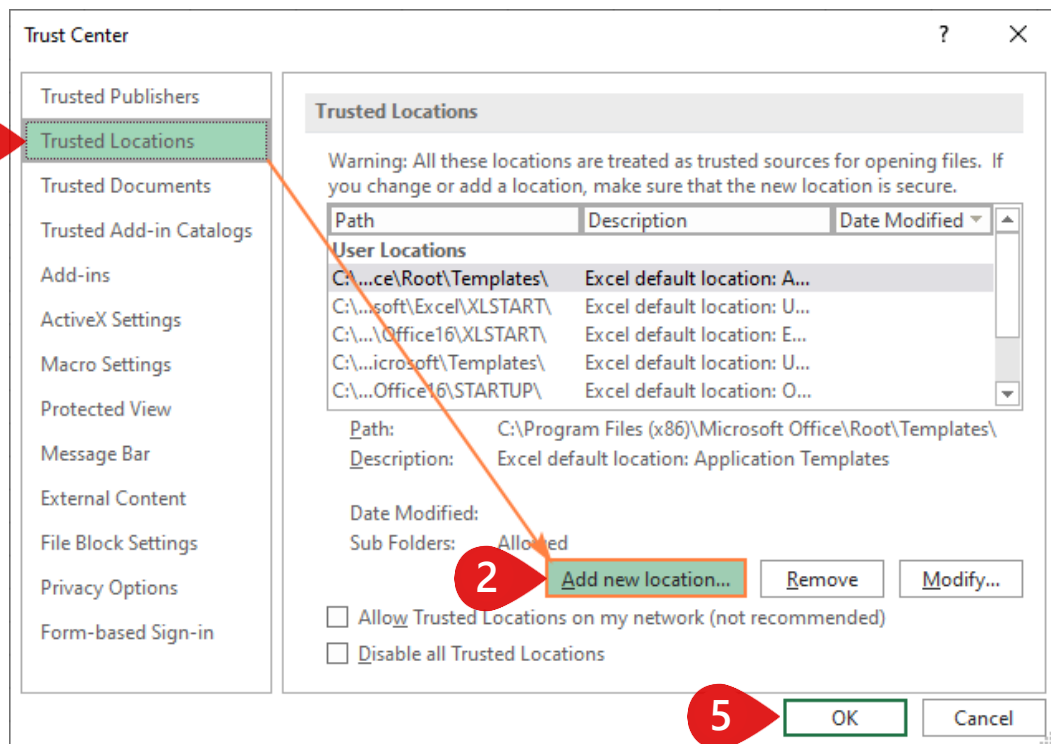
≡ Enable macros if ever you see messages like these:



Click on these buttons if you see them!



Enable Trusted Locations



In Excel, click on Files... Options. Then:

- 1) Click on Trusted Locations
- 2) Click on Add new location...
- 3) Click on Browse and select the folder where the addin file is located
- 4) Check the box concerning subfolders
- 5) Click on OK to close all windows

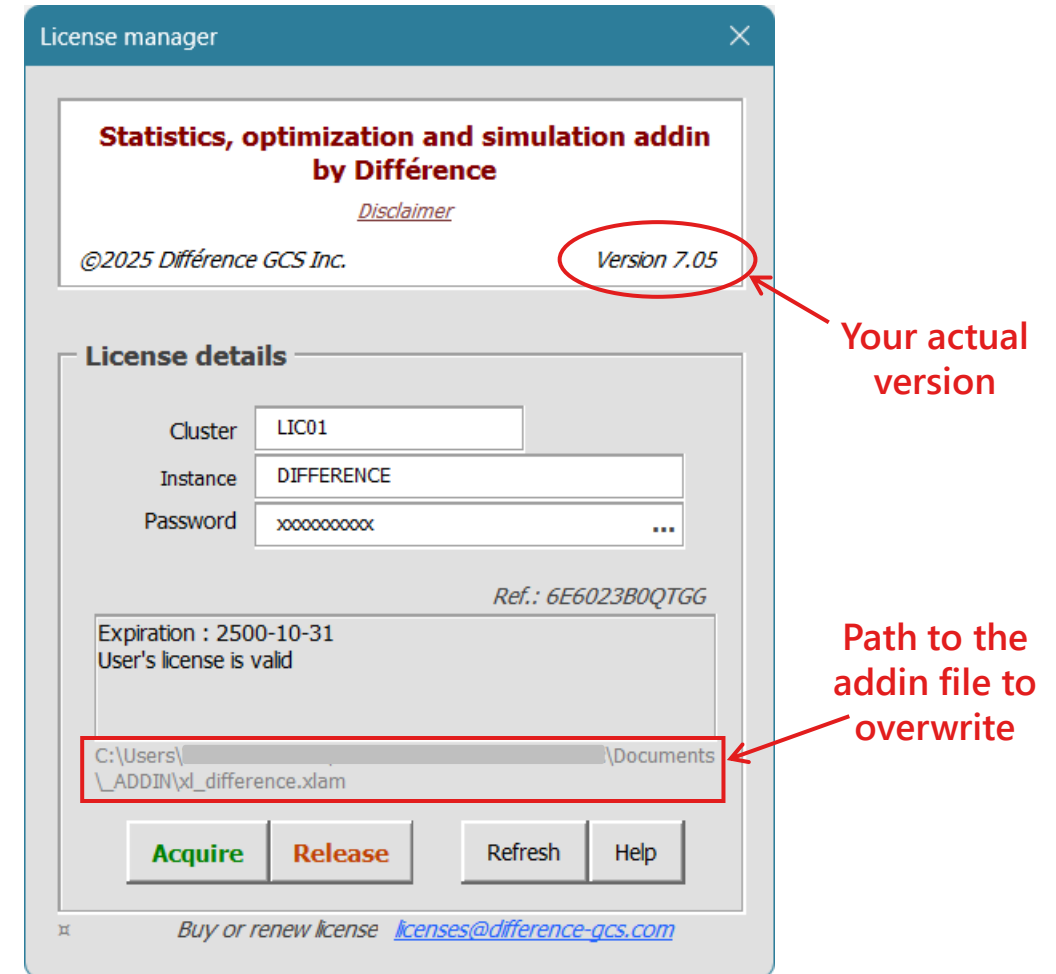


Update the addin

≡ Please visit our website to see if a newer version is available:

www.difference-gcs.com/en/addin

≡ If yes, close all Excel windows. Then download and overwrite the addin file (you may need to unblock it again)





Other related files

≡ If you need to manually download the user guide, the direct links are:

<https://www.difference-gcs.com/addin/Difference-addin-guide-en.pdf>

<https://www.difference-gcs.com/addin/Difference-addin-guide-fr.pdf>

≡ To execute the multithreaded version of the Change Point Analysis (CPA) from the Stability Analyzer module, a companion workbook is required; download and save it in the xl_difference.xlam folder:

<https://www.difference-gcs.com/addin/cpa.xlsm>